

# Don't stew over the threat of an emergency disease or pest incursion

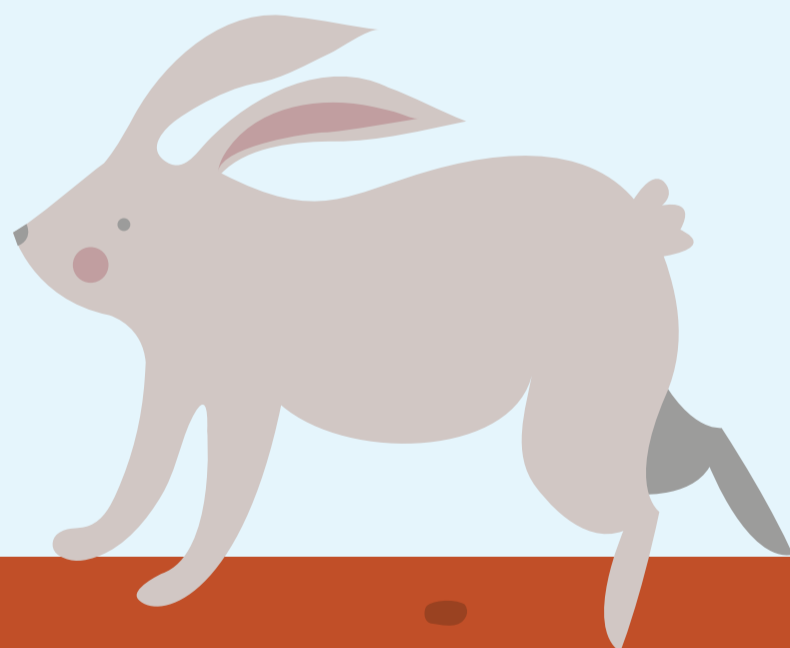
Implement a robust biosecurity plan for your business



**LOOK**

**CHECK**

**ASK A VET**



**Call the emergency animal disease watch hotline if you suspect anything unusual in your rabbits.**

Whether you farm camels or cattle, red claw or rabbit; biosecurity makes good business sense for all producers. For information about developing a biosecurity plan for your property visit [farmbiosecurity.com.au/new-emerging](http://farmbiosecurity.com.au/new-emerging)

**EMERGENCY ANIMAL  
DISEASE WATCH HOTLINE  
1800 675 888**



**RURAL INDUSTRIES**  
Research & Development Corporation